

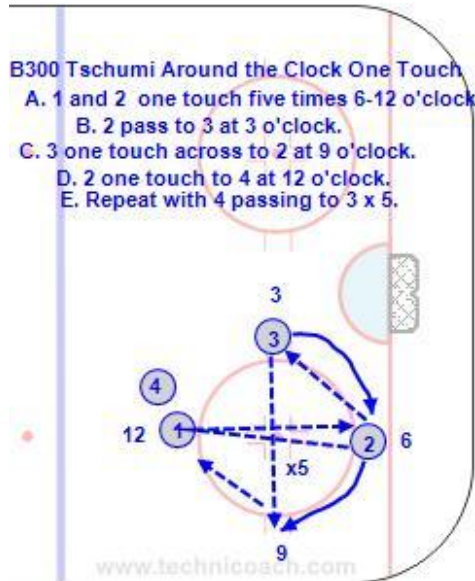


Date: 10-02-25

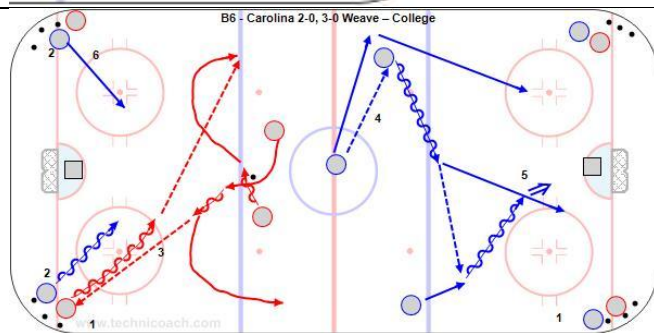
Time: 16:15-17:45

Venue: Crowchild

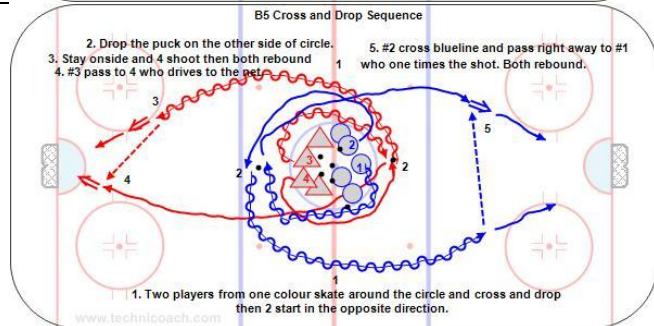
Lines:	Notes:
5' B300 – Around the Clock Passing	10' Carolina 2-0-3-0
10' DT100 - Continuous 2-1	8' - Canada Women B4-B6 Flow
15' – T2 - Continuos 5-0 x 3 - Cassie	10' - Full ice Regroup
10' – PP each end Jim 1-3-1 – Tom Overload	10' – Specialty team sequence
8' – Double cross and drop	Parent Meeting



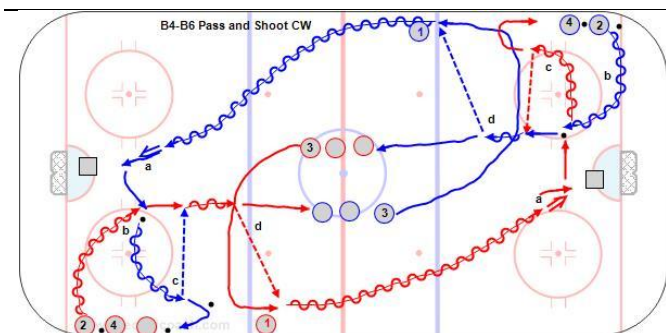
5'
B300 – Around the Clock Passing



10'
B6 - Carolina 2-0, 3-0 Weave – College M
<https://youtu.be/rTaNDctDKtc>

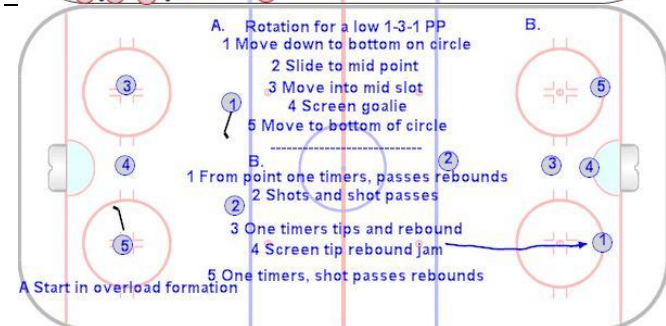


10'
B4 - Double Cross-Drop-Pass-Shoot Options - College M
https://youtu.be/HHHs_8VNjwY



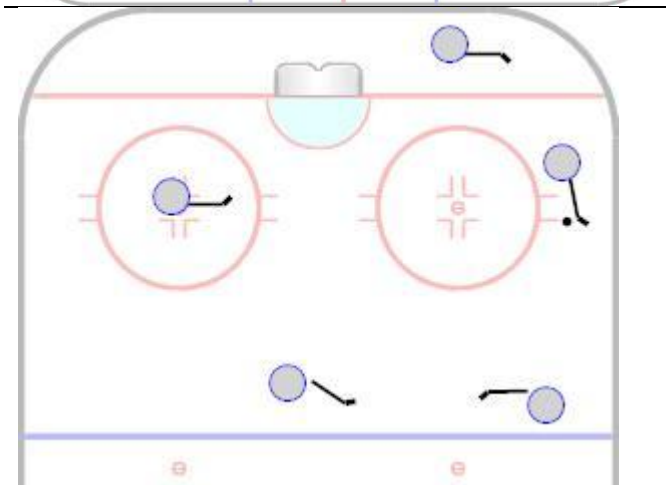
10'

B4-B6 Pass and Shoot Flow - Pro W
<https://youtu.be/H9N4O8tdrp8>

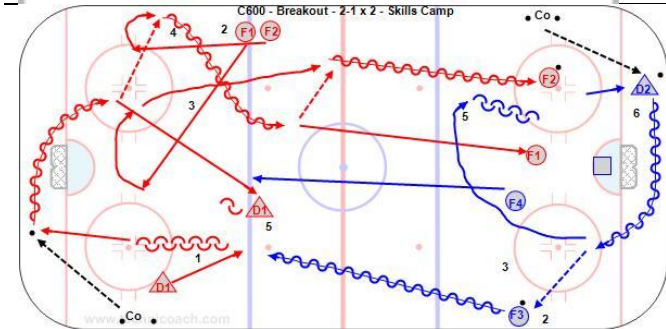


10

T2 - Diamond and Spread PP Below Goal Line - Russian U20
<https://youtu.be/Pc5ekJjiiSo>

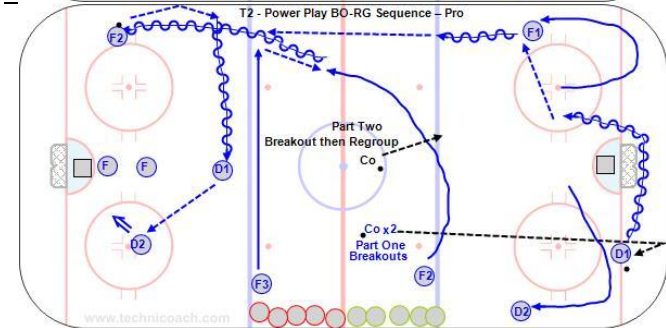


T2 - Overload PP Options - PK Review
<https://youtu.be/2o-ebHNwWL8>



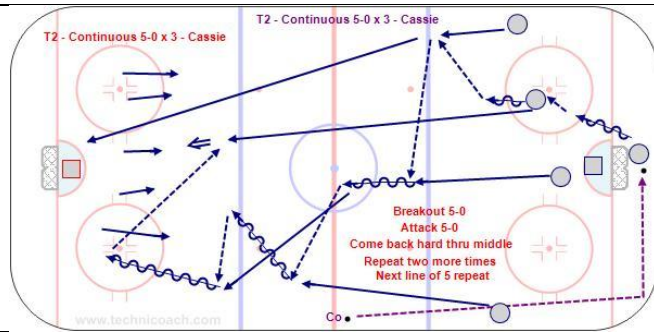
10'

Continuous 3-1 Regroup
<https://youtu.be/svSJm6X3bp4>



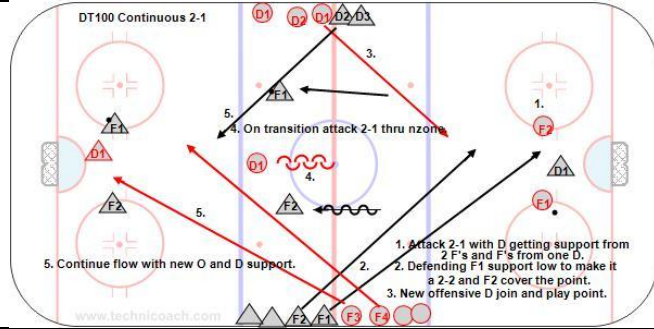
10'

T2-4 - Power Play-Penalty Kill Sequence - Pro
<https://youtu.be/VadXPVkB4>



15'

T2 - Continuous 5-0 x 3 - Cassie



10'

DT100 – Continuous 2-1

<https://youtu.be/3USLKJdp3r8>