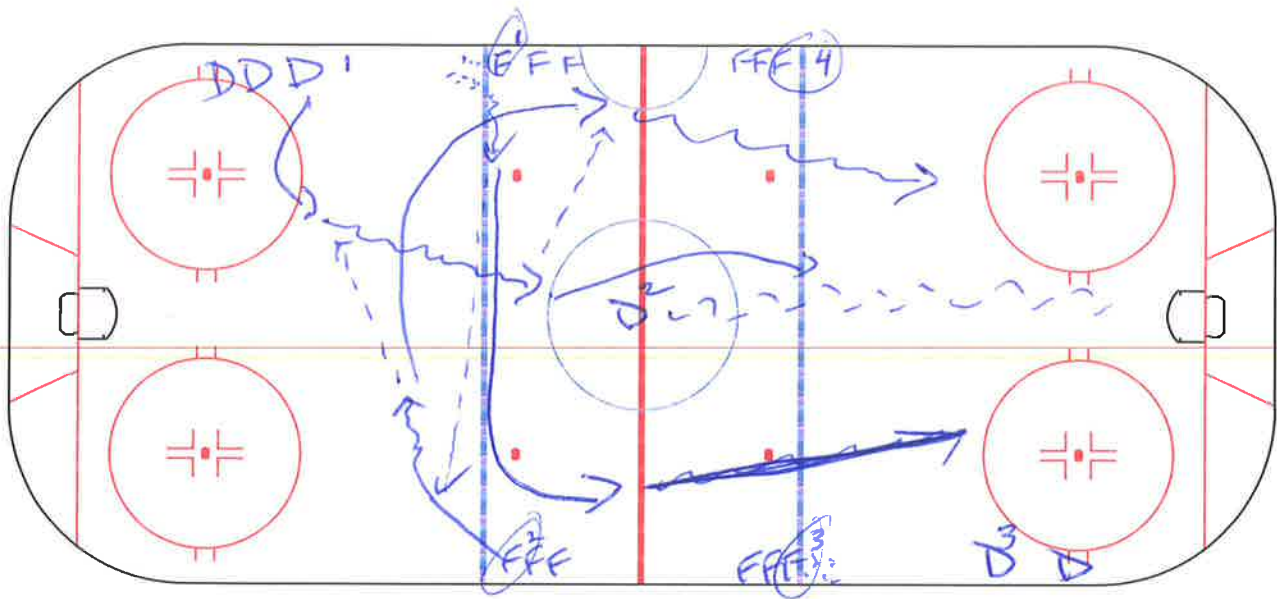


3-1 CINCINNATI

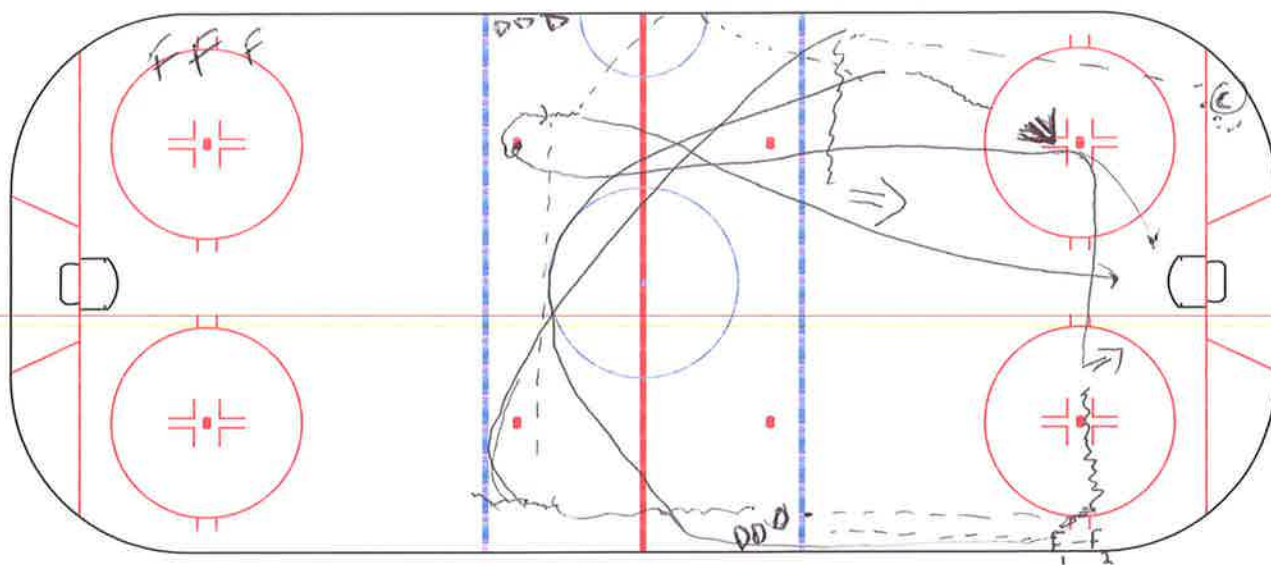


F¹ STARTS ON WHISTLE BY PASSING CROSS-ICE TO F² WHO TOUCHES TO D¹. D¹ SKATES INTO NZ TO RETURN PASS TO F^{1,2} WHO HAVE CROSSED & ARE NOT ATTACKING. D², D¹ JOINS TO MAKE IT A 3-1 RUSH. AFTER PLAY TO THE NET (C) WHISTLES TO ACTIVATE NEW ATTACK, F³ PASSES TO F⁴ & THEY ATTACK WITH D³ AGAINST ORIGINAL D¹ WHO MUST NOW RACE BACK TO DEFEND THE 3-1.

NOTES ~~NO~~ ACTIVE D ON RUSH.

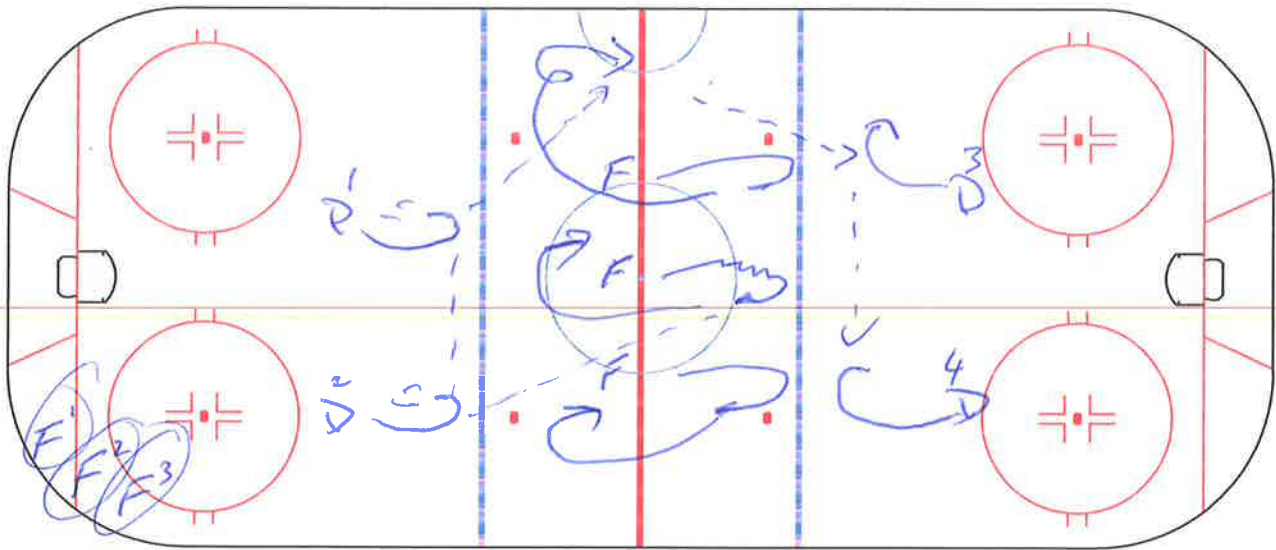
~~WXX~~ QUICK PLAY TO NET/USE D FOR SCORING CHANCE.
~~WXX~~ BACK HARD TO GET POSITIONED FOR DEFENDING NEW ATTACK.

PORTLAND 6 SHOT WITH A TWIST



F₁ drives across circle and shoots. F₁ drives the dots and opens for a pass. F₂ and D play catch while skating to the red line. D makes pass to F₁ after he's opened up. F₁ chips puck off the boards to F₂ who is coming around the center circle. F₂ skates into the OZ on the outside and shoots while F₁ drives the net. D follows up the play to the blue line and receives a pass from © in the corner. D walks the line and shoots with F₁ and F₂ in front. This can be ran at both ends at the same time.

N.Z. F✓ PART 1

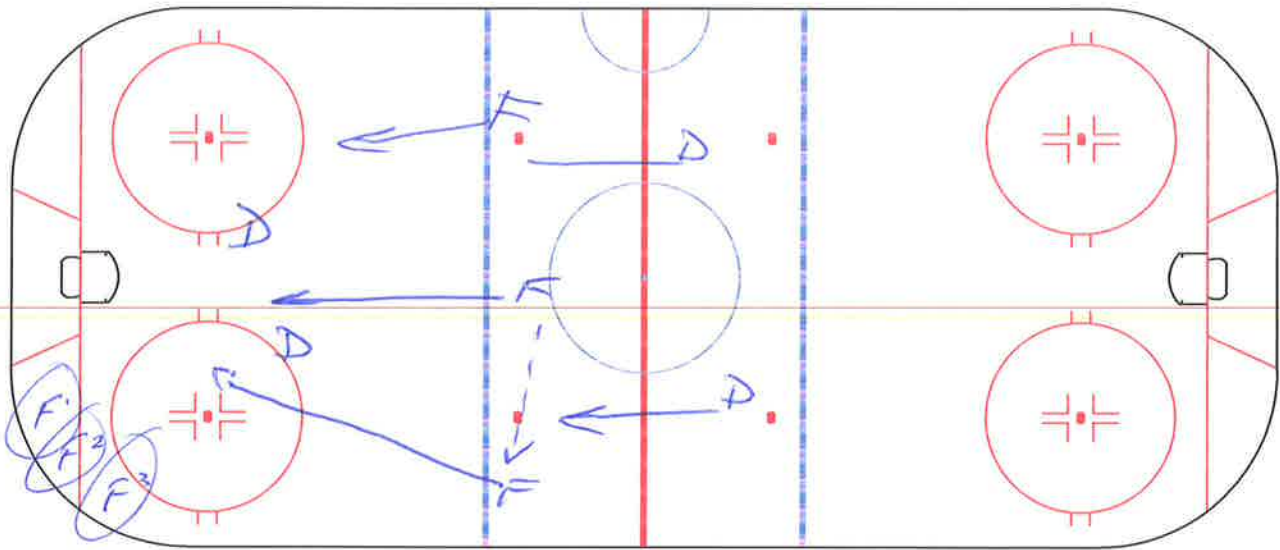


N.Z. FORECHECK -

OFFENSIVE FWDS START W PUCK IN N.Z.
ON WHISTLE SKATE TO BLUE LINE & TAG
UP. FWDS THEN REGROUP WITH D' & D?
PASS TO D^{3,4} FOR SECOND REGROUP & ATTACK
5-2.

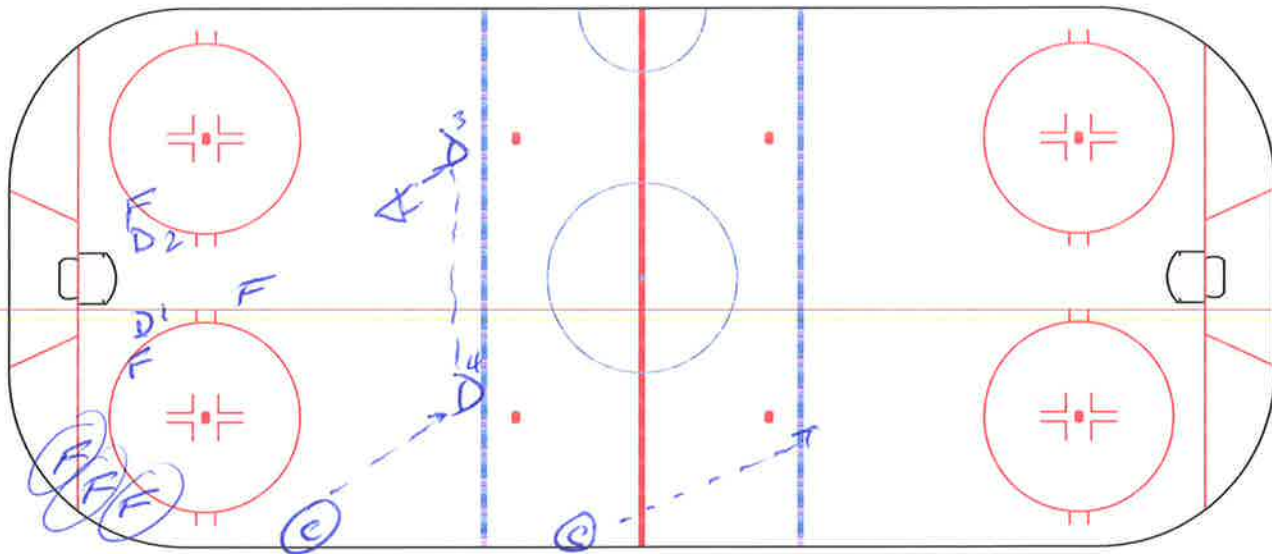
CHECKING (FWDS) ARE WAITING IN CORNER
READY TO FORECHECK.

NZ FV PART 2



5-2 ATTACK WITH NET DRIVE.

NZ F ✓ PART 3



ON WHISTLE COACH PASSES TO PT FOR
 PT SHOT. D² BOX FWDS BATTLE FOR POSITION
 NEXT WHISTLE © IN NZ SPOTS A PUCK
 IN NZ. AND ORIGINAL FWDS ATTEMPT A
 REGROUP WITH D^{3,4}.



✓ Your SYSTEM DETERMINES HOW CHECKERS MOVE. i.e. 1-2-2, 2-1-2, 1-3-1 etc.