

**Notes/Systems** \* continuous

## Description PP Game

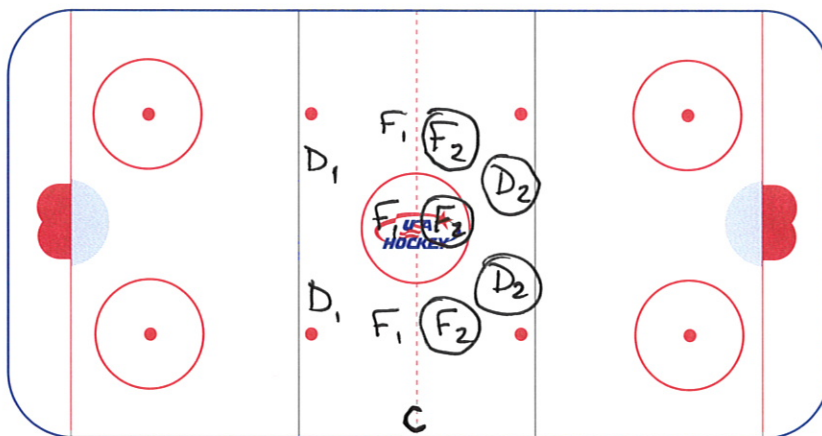
- Two nets each at bottom of FOCH on goal line tires down the middle of OZ.

O's start playing 4v2 X's for PP  
X's defend + attempt to pass to X's on other side of tires

\* ~~On scoring~~ X's then have 2 PP vs. O's

IF team scores coach passes to same PP. (make it take it)

\* Working on PP + PK options/tactics



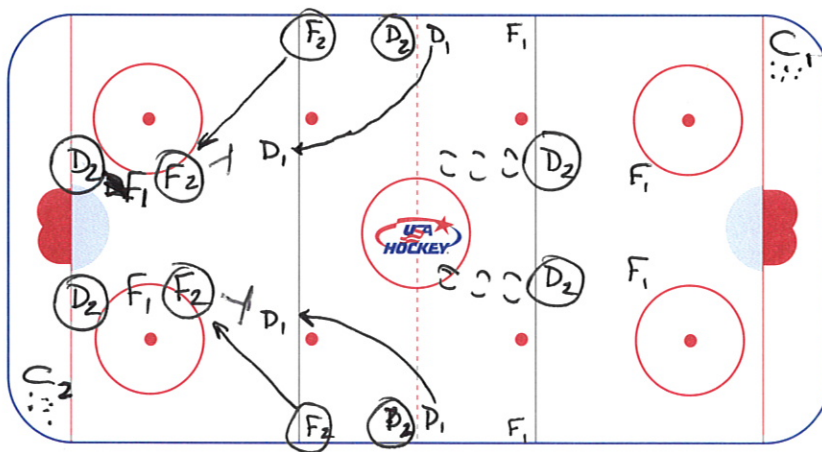
**Notes/Systems**

## Description NZ Scrimmage

- Coach has pucks on dasher wall

- Coach throws puck to 1s + 2s, go into NZ defense + play until whistle

On whistle coach throws new puck to whichever team he chooses  
team without puck plays defense in NZ.



**Notes/Systems**

## Description 2on2 Shot Block Drill

Coach 1 passes to F1s for 2on2 Rush

When 1st 2on2 rush crosses far blue line

F2s + D1s follow initial rush

\* Whistle \*

Coach 2 pass to D1 for point shot

(important F2s defend at start defending from top of circles)

Coach 2 can make 2 to 3 passes

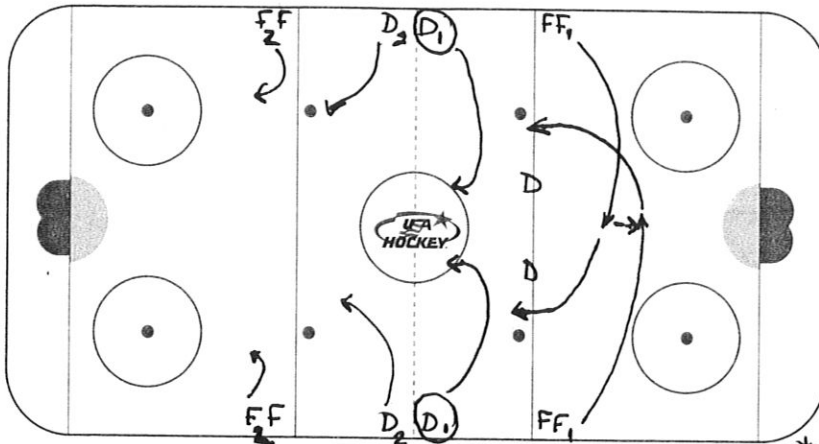
After long whistle

F1s + D2s are done

Coach 2 BOS F2s for 2on2 Rush vs. D's



## SYSTEM/DRILL



Notes/Systems

### Description Gibby 2on 2 Continuous

- F<sub>1</sub>s start with cross drop
- D<sub>1</sub>s play 2on 2 vs. F<sub>1</sub>s
- F<sub>2</sub>s & D<sub>2</sub>s follow behind 2on 2
- rush continues until D<sub>1</sub>s get push to F<sub>2</sub>
- F<sub>2</sub>s attack D<sub>2</sub>s 2on 2

\* Continuous \*

\*\* D who follow up play work on gap + "putte in": "you're out"

\*\*\* Each can have extra puck if goal scored on